

### AGRI-PROFILE OF LEYTE

Largest & oldest province in E. Visayas  
Land area: 5,712.80 sq. km.  
Three (3) Cities  
Forty (40) Municipalities  
Five (5) Congressional Districts)  
Number of Barangays: 1,641  
Population: 2,626,970 (2020 census)  
Leyte Economy: mixed agriculture,  
industrial and energy  
Land Use: agricultural land, built-up  
special land use, timberland, mangrove  
wetland



## *PAFES & CONVERGENCE*

- MOA
  - PLGU
  - DA
  - SUCs
  - LMP-Leyte
  - PAFC
  - PCCI-Leyte
  - CSO
  - NGAs: DILG, DTI, DOST, DAR, PCIC, DENR, DPWH, TESDA, DepED, PNP, Phil. ARMY

## THE PROGRAM AT A GLANCE

CPAFEP brings about projects and activities crafted and envisioned for food security and vibrant trading.

PLGU-Leyte acts at the forefront, hones and manages skills of personnel directly involved

AFE –dynamic, adaptive, resilient

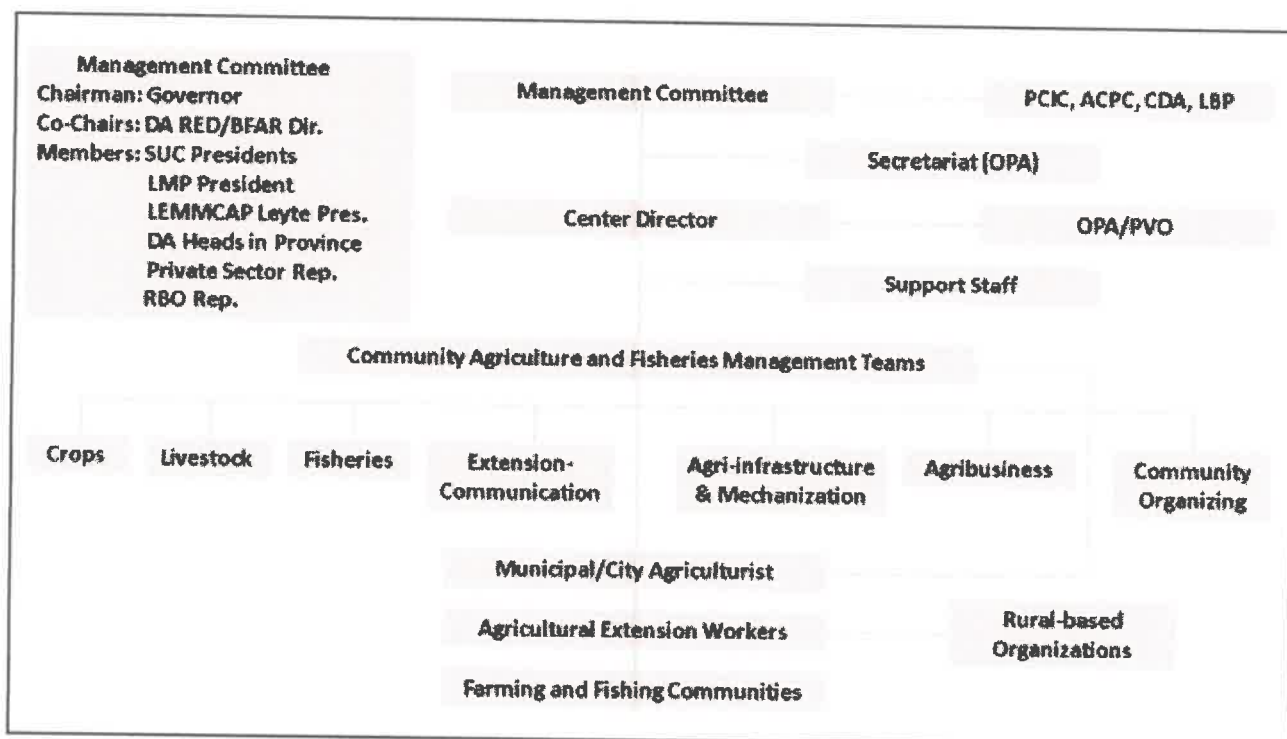
## CPAFEP was formulated according to:

Provincial Commodity Investment Plan (PCIP)

Annual Investment Plan (AIP)

Enhanced-Provincial Development and Physical Framework Plan (E-PDPFP)

and workshops results with municipal/city agriculture representatives



## PAFES FLAGSHIP PROGRAM COMPONENTS

- AGRO-ENTERPRISE DEVELOPMENT
- LOCATION-SPECIFIC TECHNOLOGY DEVELOPMENT AND DEMONSTRATION
- CAPACITY BUILDING
- INFORMATION/KNOWLEDGE SHARING
- INSTITUTIONAL STRENGTHENING

## OVERVIEW OF THE PROGRAM

Prioritized Agricultural Commodities:

- |                     |                   |
|---------------------|-------------------|
| 1. Rice             | 7. Swine          |
| 2. Corn             | 8. Native Chicken |
| 3. High-value crops | 9. Goat           |
| 4. Banana           | 10. Stingless Bee |
| 5. Jackfruit        | 11. Tilapia       |
| 6. Coconut          | 12. Seaweed       |

**Digitalization**

## COMPARATIVE ADVANTAGE AND COMPETITIVE EDGE

- ✓ MAJOR SOURCES – agriculture, industry, tourism that abounds with natural allures, rich culture and rare historical landmarks
- ✓ STRATEGICALLY LOCATED – links Luzon and Mindanao through the Maharlika Highway
- ✓ FARM TO MARKET ROADS - on going construction in most strategic barangays

- ✓ COMPETENT & SKILLED AEWs –holders of TESDA National Competency Certificates, Masters and Doctorate Degrees
- ✓ STATE UNIVERSITIES – offer agriculture and/or fisheries courses, outreach programs, research & pool of experts as resource persons
- ✓ CREDIT/FINANCIAL SUPPORT – lending institutions, NGOs, credit cooperatives

✓DIGITALIZATION - a priority of the provincial government, developed a mobile & web application “ PricEat”, for price monitoring of agricultural products in the province

- “AGREE”, digital marketing platform

### MATRIX OF COLLABORATIVE PROJECTS AND/OR STRATEGIC SUPPORT SERVICES

COMMODITY	PROJECTS/INTERVENTIONS
<b>RICE</b>	1. SEED SUFFICIENCY PROJECT
	2. IRRIGATION SYSTEM
	3. WATER RESOURCE CONSERVATION MANAGEMENT
	4. ESTABLISHMENT OF RICE PROCESSING CENTER
	5. FARM MECHANIZATION
	6. ICOT RICE PRODUCTION
	7. PROVISION OF FARM INPUTS

COMMODITY	PROJECTS/INTERVENTIONS
<b>RICE</b>	8. FARM BUSINESS ADVISORIES
	9. FARM MACHINERIES
	10. HARVESTING AND POSTHARVEST FACILITIES
	11. MARKETING
	12. EXTENSION SUPPORT, EDUCATION AND TRAINING SERVICES (ESETS)

COMMODITY	PROJECTS/INTERVENTIONS
<b>BANANA</b>	1. CAPABILITY DEVELOPMENT/RE-TOOLING OF AEWs AND STAKEHOLDERS
	2. BANANA PRODUCTION, MARKETING AND VALUE-ADDING
	3. BANANA PRODUCTION AND TRADING ENTERPRISE
	4. TRAINING CENTER FOR FOOD PROCESSING AND VALUE-ADDING OF AGRICULTURAL PRODUCTS

COMMODITY	PROJECTS/INTERVENTIONS
<b>COCONUT</b>	<ol style="list-style-type: none"> <li>1. COCONUT SEEDLING NURSERY ESTABLISHMENT</li> <li>2. COCONUT SEED GARDEN ESTABLISHMENT</li> <li>3. PROCUREMENT OF DWARF COCONUT SEEDLINGS AND DISTRIBUTION TO QUALIFIED FARMERS</li> <li>4. STRENGTHENING COCONUT FARMERS ORGANIZATIONS</li> <li>5. INTEGRATED COCONUT-BASED FARMING SYSTEM ESTABLISHMENT</li> <li>6. STANDARDIZATION OF COCO WINE "TUBA" QUALITY</li> </ol>

COMMODITY	PROJECTS/INTERVENTIONS
<b>COCONUT</b>	<ol style="list-style-type: none"> <li>7. INTEGRATED COCONUT PROCESSING CENTER ESTABLISHMENT</li> <li>8. COCONUT SHELL CHARCOAL MANUFACTURING AND PROCESSING FACILITY ESTABLISHMENT</li> </ol>
<b>HIGH VALUE CROPS</b>	<ol style="list-style-type: none"> <li>1. TECHNOLOGY EXPOSURES, FARM VISITS</li> <li>2. FARM INPUTS SUBSIDIES</li> <li>3. CAPABILITY BUILDING/RE-TOOLING</li> <li>4. INFORMATION DISSEMINATION (print, broadcast, social media)</li> </ol>



COMMODITY	PROJECTS/INTERVENTIONS
<b>HIGH VALUE CROPS</b>	5. ESTABLISHMENT OF LGU-MANAGED PLANT NURSERY
	6. ESTABLISHMENT OF WAREHOUSE FOR STORAGE OF FARM INPUTS, GARDEN TOOLS, MACHINERIES, LIVESTOCK INPUTS
	7. ESTABLISHMENT OF "BAGSAKAN" & CONSOLIDATION CENTER
<b>SWINE</b>	1. SOW LITTER/PIGLET PRODUCTION
	2. CAPABILITY DEVELOPMENT
	3. SLAUGHTER HOUSE ESTABLISHMENT

COMMODITY	PROJECTS/INTERVENTIONS
<b>GOAT</b>	1. GOAT PRODUCTION
	- FAs BENEFICIARY IDENTIFIED
	- ESTABLISHMENT OF PASTURE ARE
	- PROCUREMENT OF GOAT & BIOLOGICS
	2. CAPABILITY DEVELOPMENT (TRAININGS)
<b>NATIVE CHICKEN</b>	1. NATIVE CHICKEN PRODUCTION
	- PROCUREMENT OF GROWER CHICKEN ANIMAL
	- CONSTRUCTION OF CHICKEN SHED HOUSE
<b>CARABAO/ CATTLE</b>	1. LARGE RUMINANT ARTIFICIAL INSEMINATION
	2. DAIRY PRODUCTION

COMMODITY	PROJECTS/INTERVENTIONS
<b>SEAWEED</b>	<ol style="list-style-type: none"> <li>1. SELECTION OF FISHERFOLK BENEFICIARIES AMONG COASTAL MUNICIPALITIES</li> <li>2. TRAINING ON SEAWEED PRODUCTION –TWG &amp; FISHERFOLK</li> <li>3. PROVISION OF SEAWEED FARM IMPLEMENTS</li> <li>4. PROVISION OF SEAWEED PLANTING MATERIALS</li> <li>5. ENROLMENT TO PCIC</li> <li>6. MARKETING OF RAW DRIED SEAWEED (RDS)</li> <li>7. POST-HARVEST &amp; VALUE-ADDING OF FRESH SEAWEED</li> </ol>

COMMODITY	PROJECTS/INTERVENTIONS
<b>TILAPIA</b>	<ol style="list-style-type: none"> <li>1. PROFILING &amp; REGISTRATION OF TILAPIA FARMS &amp; OPERATORS</li> <li>2. SOURCING &amp; DISTRIBUTION OF FINGERLINGS FOR GROW-OUT &amp; SEEDING</li> <li>3. TECHNOLOGY DISSEMINATION</li> </ol>
<b>STINGLESS BEE</b>	<ol style="list-style-type: none"> <li>1. CAPABILITY BUILDING/RETOOLING, FARM VISITS</li> <li>2. STARTER COLONIES SUBSIDIES, WOODEN BOXES</li> <li>3. IEC MATERIALS PRODUCTION</li> </ol>

COMMODITY	PROJECTS/INTERVENTIONS
<b>AGRI-INFRA</b>	1. WATER RESOURCE CONSERVATION MANAGEMENT
	2. FARM MECHANIZATION
	3. FARM TO MARKET ROADS
	4. IRRIGATION SYSTEM

